

From Floods to Hope



Strengthening Rescue 1122 in Khyber Pakhtunkhwa

Prepared by HoD Media & Communication -Reema

NDRMF



Khyber Pakhtunkhwa (KP) lies at the frontline of Pakistan's climate challenges. Its mountainous terrain, fragile infrastructure, makes it highly vulnerable to torrential rains, flash floods, and landslides. Over the years, disasters have repeatedly overwhelmed the province's emergency response capacity. Limited resources, outdated equipment, and scattered coverage left communities, especially those in remote districts, exposed and unprotected when disaster struck.

The devastating flash floods August 15–18, 2025, once again underscored this vulnerability. Overflowing rivers and nullahs swept away homes, schools, roads, and bridges.



2,592 houses
destroyed



301 schools
damaged



5,485 cattle
perished



415 lives
lost

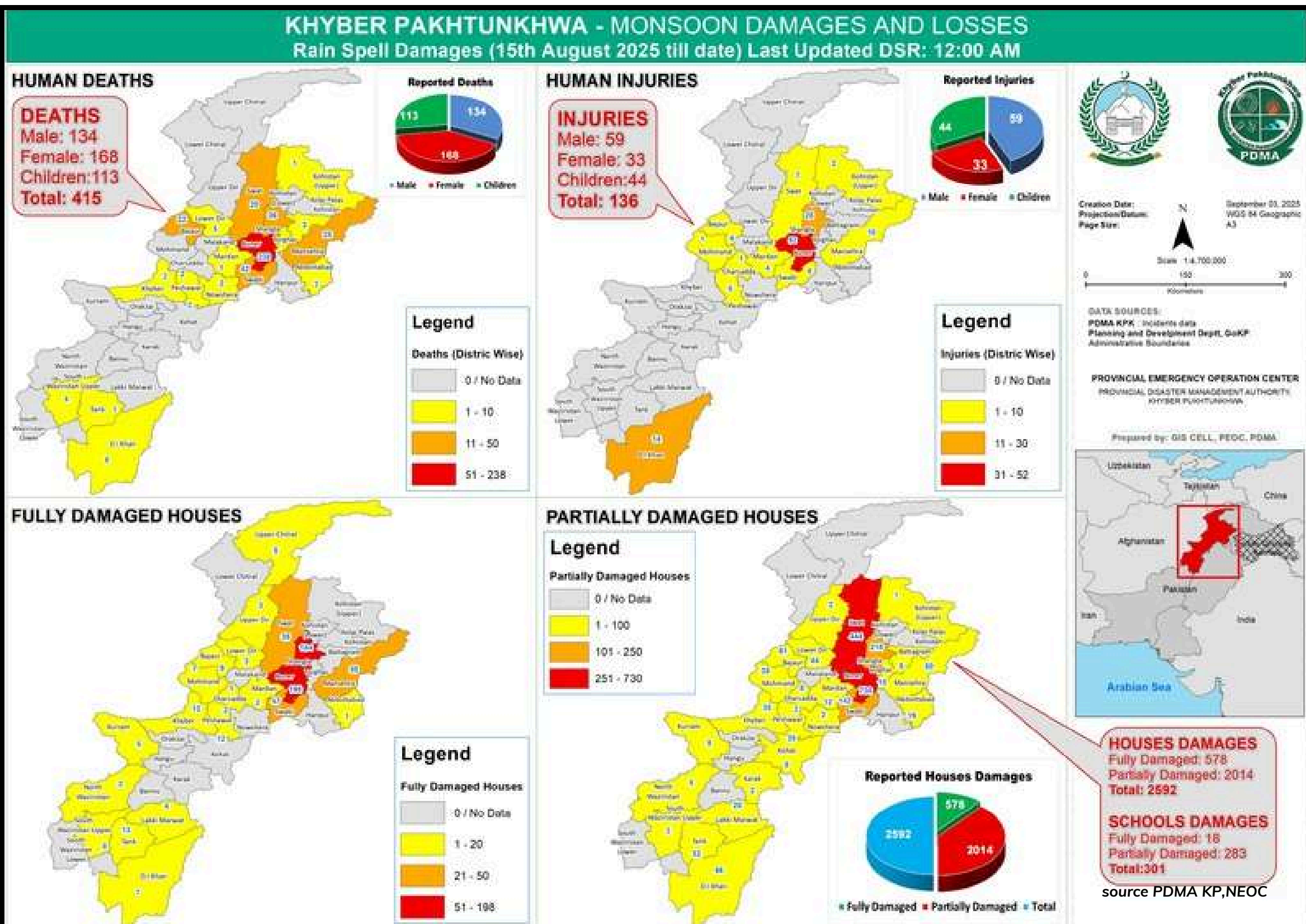
Communities were displaced, agricultural lands washed away, and access to basic services cut off. Families stranded on rooftops, waiting for help, symbolized both the scale of destruction and the urgent need for stronger rescue services.

Geographical Spread of Damages – Floods 2025



The map highlights the widespread devastation across KP, with several districts severely affected by torrential rains and flash floods. The most affected districts include Buner, Shangla, Swabi, Mansehra, Bajaur, Swat, Dera Ismail Khan, and Lower Dir, while damages were also reported in Peshawar, Mardan, Upper Kohistan, and South Waziristan.

This visualization reflects the scale of impact and the urgent need for preparedness and strengthened emergency response across the province.



NDRMF Intervention in KP



Recognizing these challenges, the **Government of KP**, with support from the **National Disaster Risk Management Fund (NDRMF)**, launched a landmark initiative:

“Strengthening & Disaster Preparedness of Rescue 1122 across 35 districts of KP.”

State-of-the-art Equipments

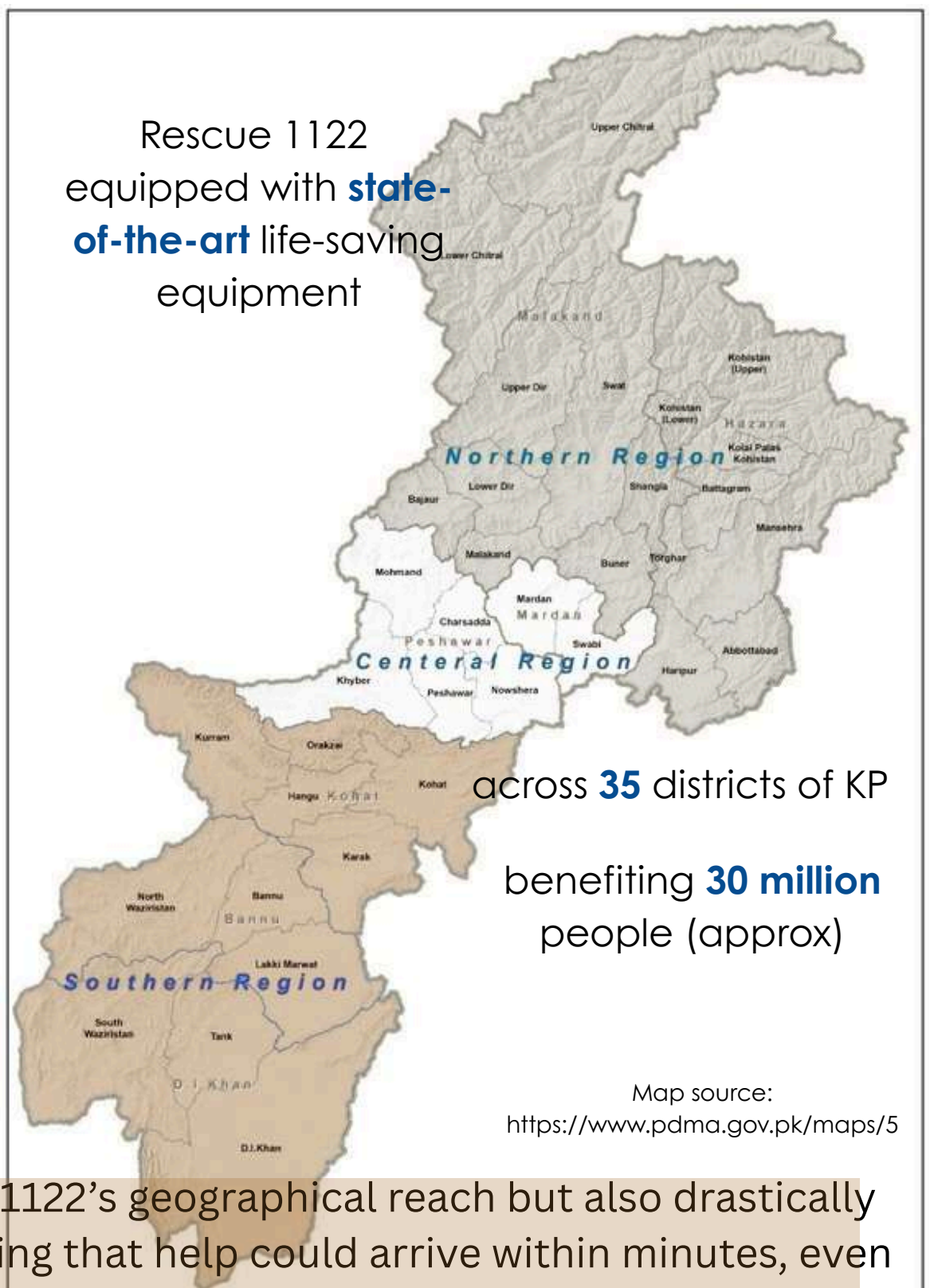
- Ambulances & fire vehicles
- Rescue boats & water rescue gear
- Heavy-duty cranes & hydraulic jacks
- Including many other equipments



Invested

PKR **1,369.579** million

Rescue 1122 equipped with **state-of-the-art** life-saving equipment



This initiative not only expanded Rescue 1122’s geographical reach but also drastically reduced emergency response time, ensuring that help could arrive within minutes, even in hard to reach areas.

Impact of the Project



When the August 2025 floods hit, the difference was clear. The project has brought long-term improvements in emergency response capabilities across KP, directly and indirectly benefiting an estimated 30 million people.

Rescue teams, newly equipped and strategically positioned across all 35 districts of KP (including merged FATA areas), were able to:



Reach cut-off communities swiftly



Evacuate families trapped in flooded homes



Restored hope in districts, once beyond the reach of timely assistance





Behind every number lies a story: a family saved from raging flood water, a child rescued from a collapsed school, an elderly patient carried to safety in a new ambulance.

These are not just outcomes of investment; they are testaments to resilience, preparedness, and partnership

A STORY OF PREPAREDNESS & HOPE

“I am very thankful to Rescue 1122. The team rescued me covering, about 600ft distance in the flood area while the water flow was very fast. May Almighty Allah blessed them with success ahead.”

By strengthening Rescue 1122, NDRMF and the Government of KP have transformed disaster response into disaster readiness turning tragedy into an opportunity to build a safer, stronger, and more resilient Khyber Pakhtunkhwa.

Key impacts of



30 million beneficiaries
(across 7 KP divisions)

“Strengthening & Disaster Preparedness of Rescue 1122

PKR 1,369.579 million funded by NDRMF - across 35 districts of KP.”



Enhanced Public Safety

Community confidence,
including in tourist heavy regions



Reduced Emergency Response time

Increased Rescue 1122's operational
reach by 10%, especially critical
during monsoon induced floods



Advanced Technology

Efficiently conducted SAR
operations in targeted districts



Expanded Coverage

Strengthen Rescue 1122 setup
across the province including,
merged districts (FATA)



Lives Saved

Effectively responded to 2,552
past emergencies using newly
acquired resources



Gender Exclusive Response

Female rescuers active
participation in all operations



Dera Ismail Khan, Khyber Pakhtunkhwa, Pakistan

Collectively, these advancements have transformed Rescue 1122 into a stronger, faster, and more inclusive emergency service, capable of safeguarding lives and livelihoods across KP.

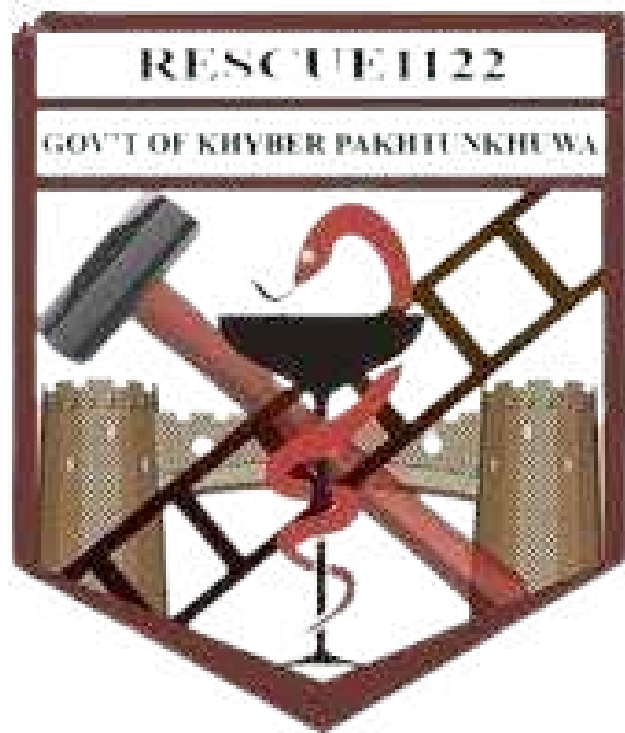
MESSAGE FROM THE FIELD

"During the recent flood operations, NDRMF support had been very critical in enabling timely response. Our teams were able to use boats, life jackets, life buoys, ropes, rope-throw guns, torches, equipment provided under the NDRMF supported project, to carry out effective search and rescue (SAR) operations. These tools allowed us to safely evacuate vulnerable communities.

On behalf of Rescue 1122, I extend my sincere gratitude to NDRMF for timely investment in strengthening Rescue 1122 capacity. This support has truly enabled us to protect lives when it mattered the most".

IRFAN ULLAH, DEPUTY DIRECTOR PLANNING RESCUE 1122 KP

“Strengthening & Disaster Preparedness of Rescue 1122 across 35 districts of KP.”



**TOGETHER, WE ARE NOT ONLY SAVING LIVES TODAY BUT
SAFEGUARDING FUTURES FOR TOMORROW**

DISCLAIMER:

THE FIGURES AND INFORMATION PRESENTED ARE BASED ON PRELIMINARY DAMAGE ASSESSMENTS AND REPORTS RECEIVED FROM PROVINCIAL AUTHORITIES AND RESCUE 1122 TEAMS. DATA MAY BE SUBJECT TO VERIFICATION AND UPDATES AS ASSESSMENTS CONTINUE.