

3.2. Training Program

This support under PPF will be continuous and cyclic. It entails training based on different learning techniques including group reading and discussions, exposure visits to reputed national or international organizations and institutes, case studies, and problem-solution oriented learning with a focus on project and proposal preparation to solicit funding from international financial institutions.

PROCESS FLOW



ASSESSMENT OF APPLICATIONS

- Review of organizational mandate
- Technical capacity of the institution
- The organization's governance structure
- Internal procedures and controls
- Organizational strengths and weaknesses
- Sustainability requirements
- Overall capacity needs of the organization



Contact Details

- 📍 **Project Preparation Facility (PPF)**
5th Floor, EOBI building, Block 33-34, Service Road South, Mauve Area, Near NADRA Office G-10/4, Islamabad.
- ☎ +92-51-9108300 📠 +92-51-9108377
✉ zulqarnain.rafiq@ndrmf.pk
🌐 www.ndrmf.pk



THE PROJECT PREPARATION FACILITY

PROJECT PREPARATION AND PROGRAM DEVELOPMENT FOR NATIONAL RESELIENCE BUILDING

www.ndrmf.pk

Conceptualised the Content,
Design and Layout by:

REEMA
Media & Communications, NDRMF

Content Support by:

ZULQARNAIN RAFIQ
Manager PPF



2 AWARENESS RAISING, KNOWLEDGE BUILDING, AND ADVOCACY

This component entails dissemination of information to a wide range of stakeholders updating them on the emerging profile of the hazard-scape of the country. Information will be provided on consequent changes in the nature and intensity of climate-induced risk and updated knowledge and practices on available options for risk mitigation.

For raising awareness among various stakeholders, creating a knowledge base, and using advocacy for organizational initiatives, this component of PPF will primarily rely on building partnerships with local, national, and international organizations including UN agencies. Other initiatives include multi-partner policy dialogues based on relevant topics and resulting evidence from research studies, thematic seminars and workshops, social media discussion forums and learning events involving subject experts and professionals, and online educational and learning tools.



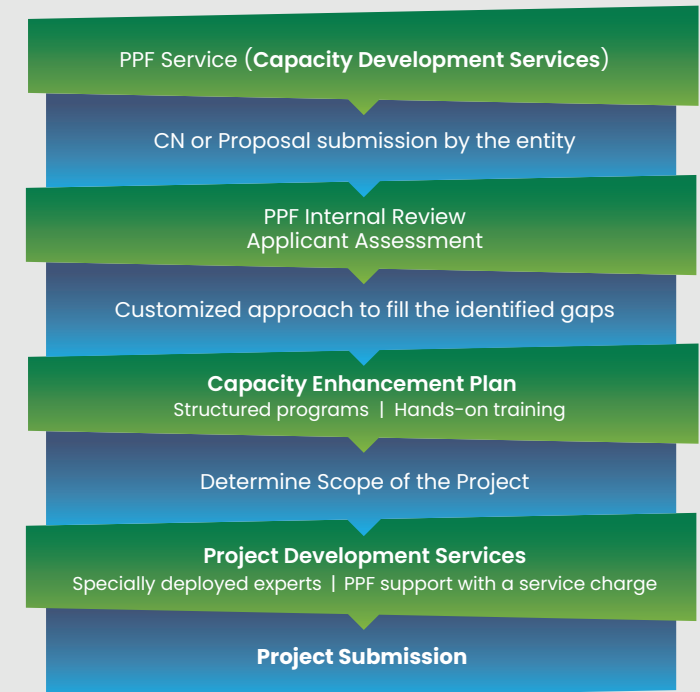
3 INSTITUTIONAL STRENGTHENING SUPPORT

This component will provide cross-cutting support to the most relevant partners.

3.1. Capacity Development Services

Upon receiving a formal request for capacity development or support for project preparation, institutional development, capacity building, and systems strengthening services are provided to the applicant organizations. The nature and kind of support to be provided is proposed by an expert or advisory firm after carefully identifying the applicant organization's needs and capacity gaps.

PROCESS FLOW



ABOUT NDRMF

NDRMF is a Federal Grant financial intermediary exclusively focused on investing in disaster-related initiatives across Pakistan, especially in the country's most vulnerable regions. The Fund provides grant financing to public and non-public sector entities for their interventions to reduce the socio economic and fiscal vulnerability of communities. NDRMF prioritizes investments in disaster risk reduction (DRR), disaster resilience, climate change adaptation and mitigation, reducing vulnerabilities, and post-emergency and development interventions aimed at national resilience building.

WHAT IS THE PROJECT PREPARATION FACILITY (PPF)

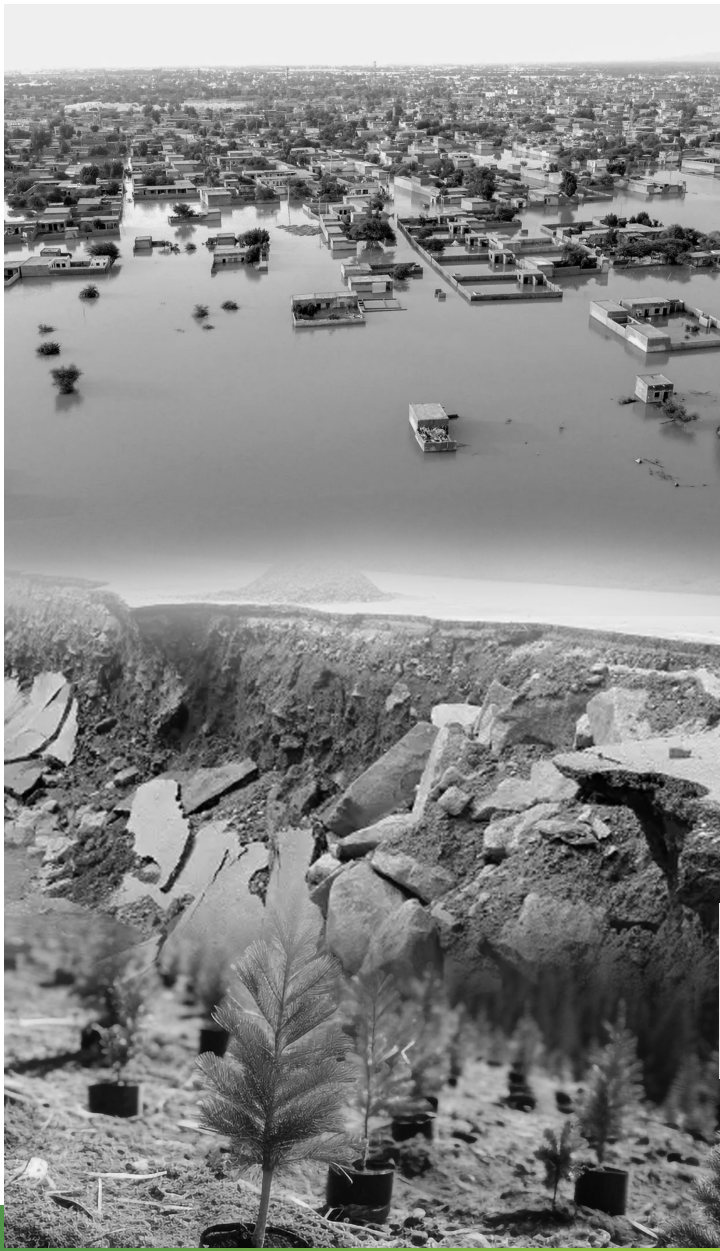
The establishment of Project Preparation Facility (PPF) by NDRMF for mobilising internal financing of the is meant to address critical capacity gaps across governmental and non-governmental organizations. With a focus on building long-term resilience, the PPF will address the project planning, program and proposal development, and institutional strengthening challenges by building capacity of institutions and providing technical support for the preparation of high-quality bankable projects and proposals in compliance with technical and regulatory requirements of international agencies and development partners.

WHY PPF?

PPF, through various modes of support, will overcome these challenges by helping partners and stakeholders in preparation of high-quality bankable projects along with awareness raising, knowledge building, and advocacy. Accordingly, this much needed PPF support will directly contribute to overall resilience building and climate action in the country.

BACKGROUND AND CHALLENGES

Over the years, organizations and entities mandated to spearhead the resilience building agenda have encountered profound and diverse challenges in project preparation processes and complying with technical and regulatory aspects of proposal development to enhance the implementation viability of the desired initiatives. Consequently, donors have been facing the constant challenge of not receiving high quality projects and proposals from the implementing agencies.



PPF OBJECTIVES



Address technical capacity constraints prevalent in government and non-governmental departments and organizations for preparation of high quality thematically focused projects and programs complying with international requirements and contributing to national resilience building.



Build the capacity of stakeholders and partners by providing a comprehensive set of technical assistance and capacity enhancement tools and resources.



Leveraging NDRMF's widely acknowledged position as a financial intermediary to invest in projects and programs that are in compliance with the investment and eligibility criteria of international financial institutions.

PPF'S SUPPORT FOR PARTNERS AND STAKEHOLDERS

Project Development & Institutional Strengthening

Initially, three modes of support are available during the first phase of PPF rollout to cater the envisaged approaches to capacity development:

- 1

Project Development Services
- 2

Awareness raising, Knowledge building, and Advocacy
- 3

Institutional Strengthening Support

MODE OF SUPPORT

ROSTER OF EXPERTS

PPF will maintain a roster of independent and competent experts, consultants, and advisors who will provide project development support to selected organizations including:

- Pre-feasibility or feasibility studies;

■ Financial analysis and services;

■ Case-specific project engineering;

■ Risk assessments and mitigation plans including hazard assessments and identification and assessment of potential executing entities;

■ Environmental, social, and gender analyses based on international best practices and standards;
- Preparation of good quality proposal narratives in line with high international standards;

■ Monitoring and results frameworks including identification of program and project indicators;

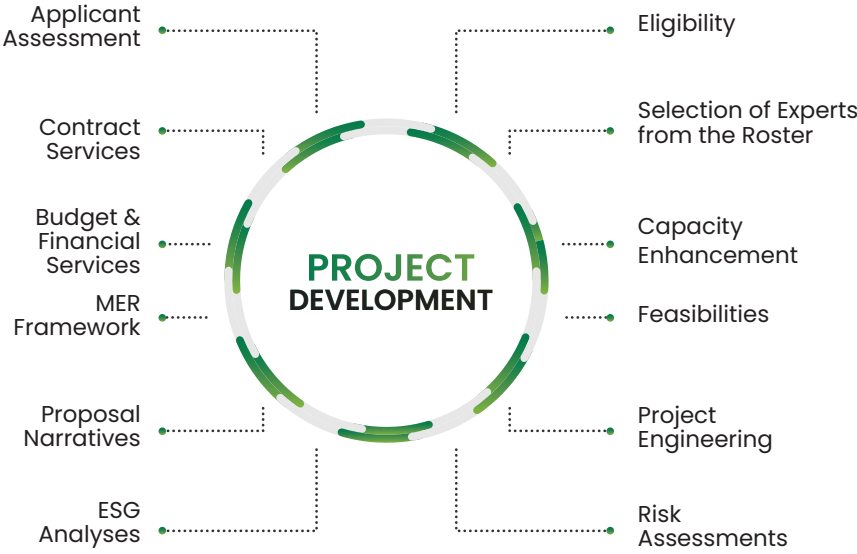
■ Budgets and budget narratives;

■ Pre-contract services, contracts management advice, and related services.

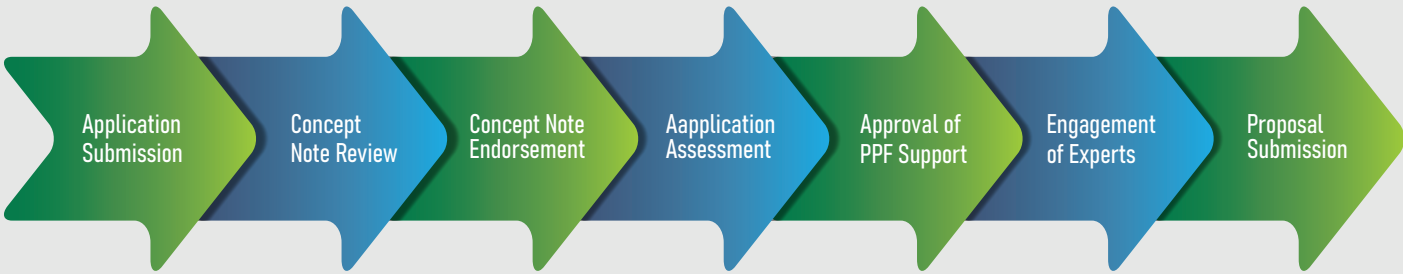
1 PROJECT DEVELOPMENT SERVICES

This component provides technical support to both governmental and civil society organizations to formulate, implement, and manage projects and programs related to DRR, climate change adaptation and mitigation, and other development interventions that:

are in compliance with technical, methodological, and regulatory requirements of regional and international partners; and
Lead to national resilience building.



PROCESS FLOW



ASSESSMENT OF APPLICATIONS

- Review of organizational mandate

■ Technical capacity of the institution

■ The organization's governance structure

■ Internal procedures and controls

■ Organizational strengths and weaknesses
- Sustainability requirements

■ Overall capacity needs of the organization

■ The impact and paradigm change potential of the concept

■ Possibility of large-scale government ownership.